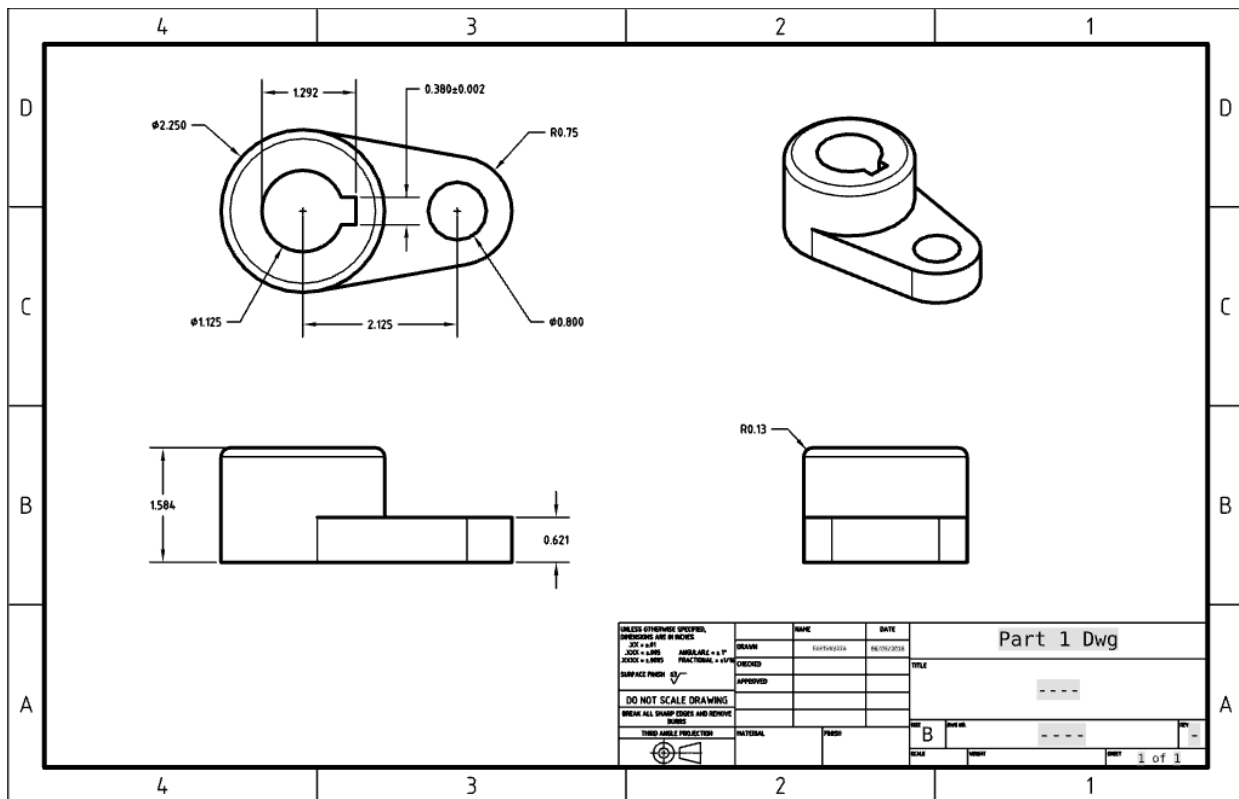
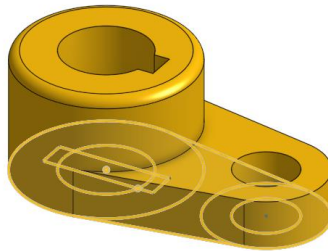


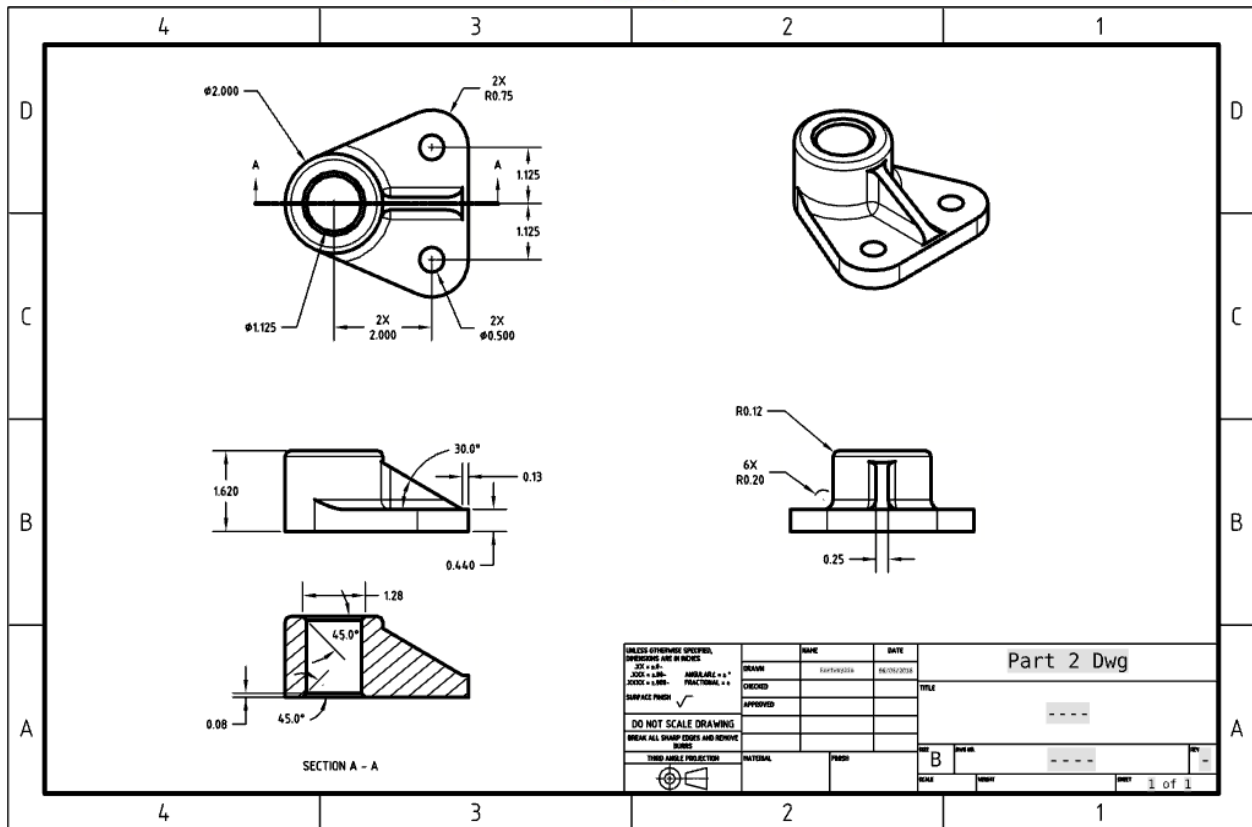
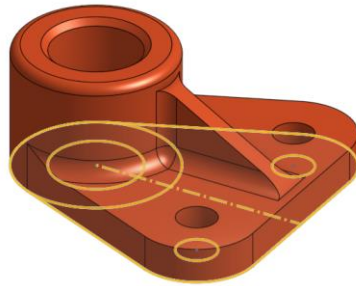
Week 2 Homework:

Create the following geometry using the following dimensions. PDF versions of all drawings are included in the folder called "[Drawings for Homework](#)" under the Week 2 folder.

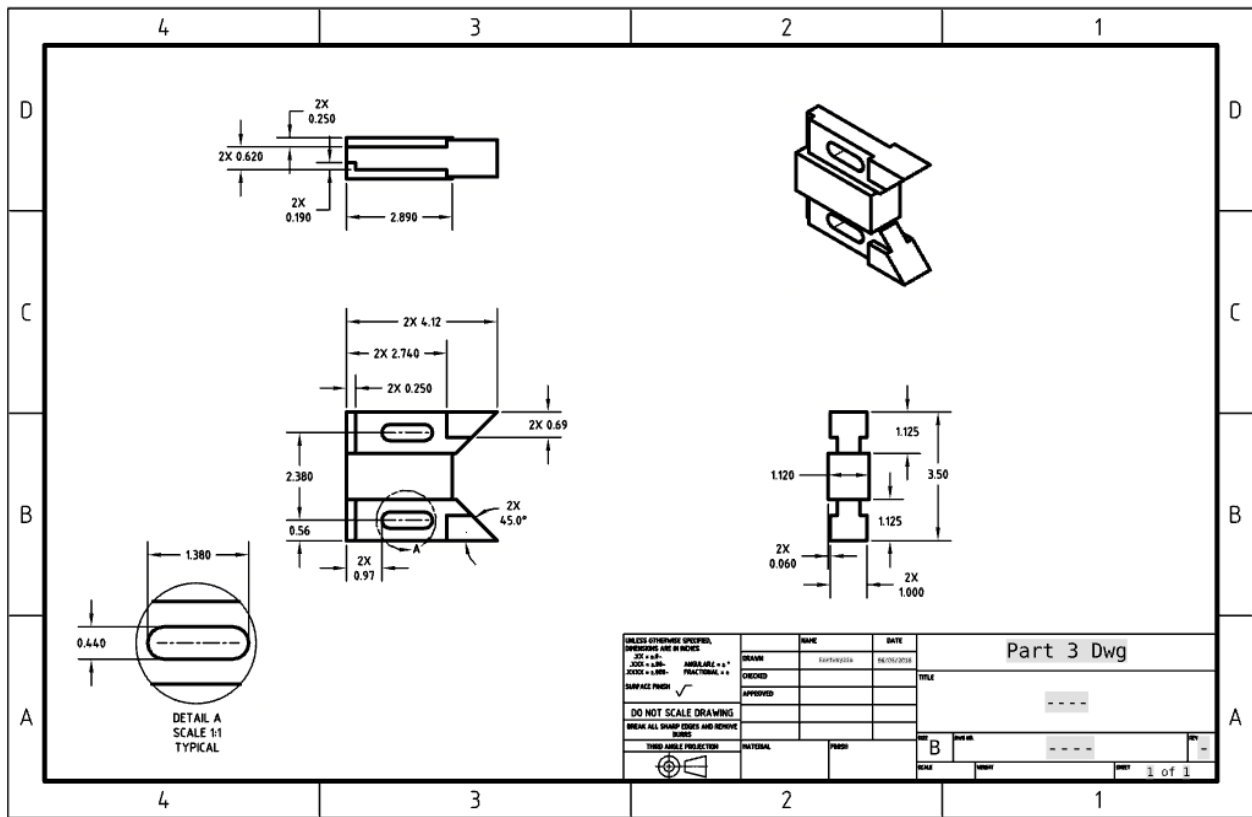
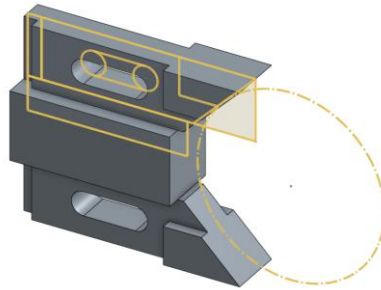
Exercise #1:



Exercise #2:

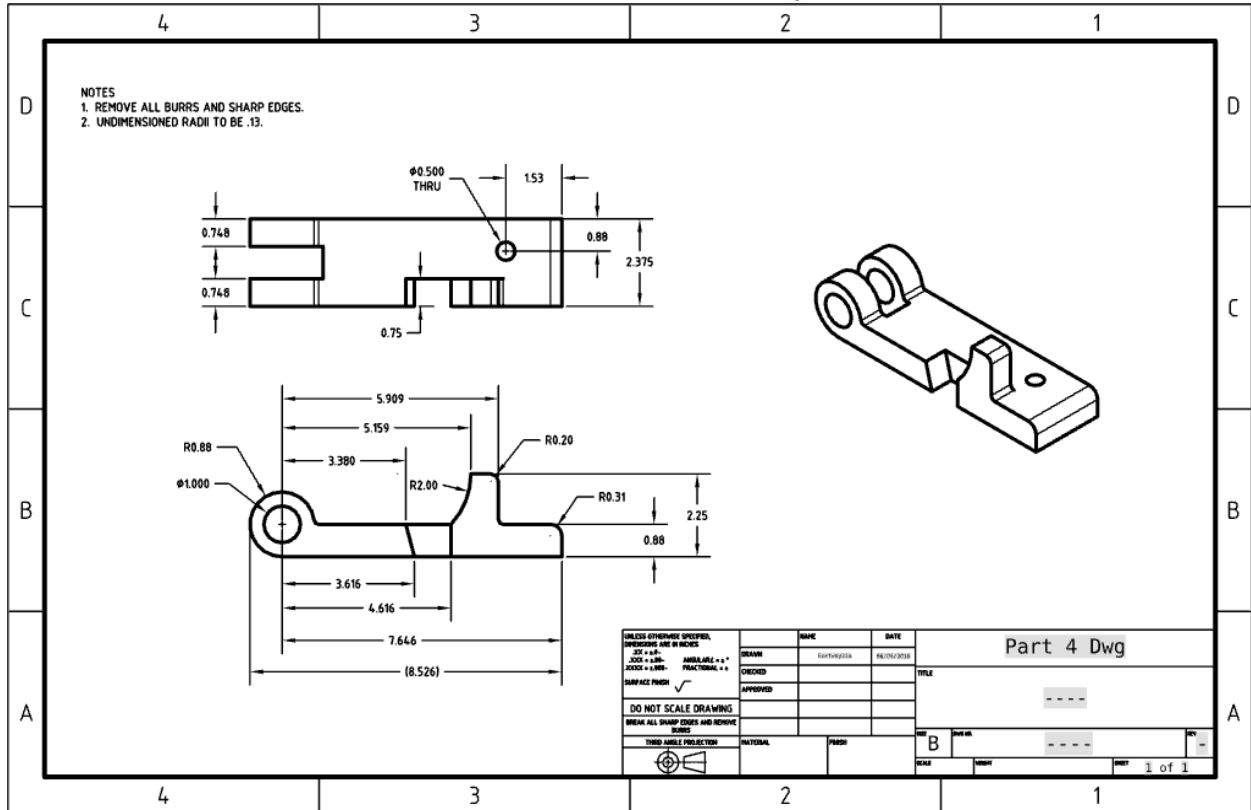
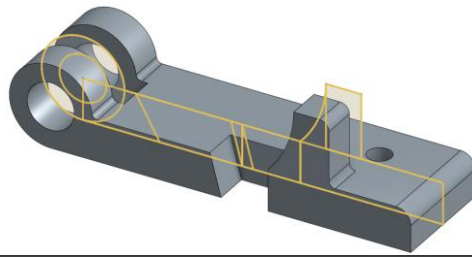


Exercise #3:



UNLESS OTHERWISE SPECIFIED, DIMENSIONS ARE IN INCHES 2X = 0.015 3X = 0.030 4X = 0.045 5X = 0.075 6X = 0.120 7X = 0.180 8X = 0.240 9X = 0.300 10X = 0.375 12X = 0.450 15X = 0.5625 20X = 0.750 25X = 0.9375 30X = 1.125 40X = 1.500 50X = 1.875 60X = 2.250 80X = 3.000 100X = 3.750 125X = 4.6875 150X = 5.625 200X = 7.500 250X = 9.375 300X = 11.250 400X = 15.000 500X = 18.750 600X = 22.500 800X = 30.000 1000X = 37.500		NAME	DATE	Part 3 Dwg
DRAWN	DATE	TITLE		
CHECKED				
APPROVED				
DO NOT SCALE DRAWINGS BREAK ALL SHARP EDGES AND REMOVE RIBS				
THIRD ANGLE PROJECTION	PARTIAL	FINISH	B	
			1 of 1	

Exercise #4:



Exercise #5:

